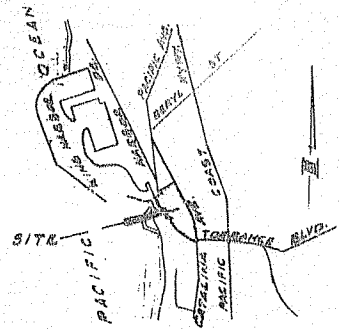


DM4367 pg 230

1616



VICINITY MAP
NO SCALE
CERTIFICATE
UNDER CALIFORNIA CIVIL CODE
SECTION 1991

Recording Requested by:
Transamerica Title Ins. Co.
WHEN RECORDED RETURN TO:
Transamerica Title Ins. Co.
8487 W. 31st St.
g. Wood
L. A. Calif. Attention

CONDOMINIUM PLAN FOR
TRACT NO. 31193
BOOK 925 PAGES 11 AND 12
AND
PARCELS 4 AND 10 OF OFFICIAL MAP NO. 12 BOOK
5 PAGES 21-23.

NOTES AND DEFINITIONS

- PROJECT DESCRIPTION: THE LAND INCLUDED WITHIN THIS PROJECT IS ALL OF LOT 1, TRACT NO. 31193, BOOK 925, PAGES 11 AND 12 OF MAPS AND ALL OF PARCELS 4 AND 10 OF OFFICIAL MAP NO. 12, BOOK 5, PAGES 21, 22 AND 23 OF MAPS.
- THE COMMON AREA OF THE PROJECT IS THE LAND AND REAL PROPERTY ALL IN THE COUNTY OF LOS ANGELES, STATE OF CALIFORNIA, INCLUDED WITHIN THE BOUNDARY LINES OF LOT 1, TRACT NO. 31193 AS PER MAP RECORDED IN BOOK 925, PAGES 11 AND 12 AND OF PARCELS 4 AND 10, OF OFFICIAL MAP NO. 12 AS PER MAP RECORDED IN BOOK 5, PAGES 21, 22 AND 23 AS PER MAPS IN THE OFFICE OF THE COUNTY RECORDER OF SAID COUNTY, EXCEPT THOSE PORTIONS SHOWN AND DEFINED HEREIN AS UNITS 1 TO 110 INCL. AND 112 TO 324 INCL. UNIT 111 IS A RECREATION ROOM AND IS PART OF THE COMMON AREA.
- EACH OF UNITS 1 TO 324 INCLUSIVE IS COMPOSED OF TWO (2) OR MORE AIR SPACES AS SET FORTH IN THE COMPLETE LISTING OF UNITS HEREIN.
- THE FOLLOWING ARE NOT PART OF A UNIT: BEARING WALLS, COLUMNS, VERTICAL SUPPORTS, FLOORS, ROOFS, FOUNDATIONS, BEAMS, BALCONY RAILINGS, PATIO FENCES, PIPES, DUCTS, FLUES, CONDUITS, WIRING AND OTHER UTILITY INSTALLATIONS, WHEREVER LOCATED, EXCEPT THE OUTLETS THEREOF WHEN LOCATED WITHIN THE UNIT.
- EACH OF THE FOLLOWING AIR SPACES ARE APARTMENTS:

- | | | |
|------------------|---|---|
| BUILDING NO. 7 | } | 101-112 INCL., 114-117 INCL., 201-212 INCL., 214-217 INCL., 301-312 INCL., 314-317 INCL., |
| BUILDING NO. 8 | | |
| BUILDING NO. 10 | | |
| BUILDING NO. 11 | | |
| BUILDING NO. 12 | | |
| TOWNHOUSE NO. 4: | 4D-1 - 4D-6 INCL., 4E-1 - 4E-4 INCL., 4F-1 - 4F-4 INCL. | |
| TOWNHOUSE NO. 5: | 5D-1 - 5D-4 INCL., 5E-1 - 5E-4 INCL. | |
| TOWNHOUSE NO. 6: | 6D-1 - 6D-6 INCL., 6F-1 - 6F-4 INCL. | |

THE BOUNDARIES OF EACH SUCH APARTMENT ARE THE INTERIOR SURFACES OF THE PERIMETER WALLS, FLOORS, CEILINGS, WINDOWS AND DOORS THEREOF WHERE THEY EXIST OR HORIZONTAL AND VERTICAL PLANES AT THE LIMITS OF THE DIMENSIONS AND ELEVATIONS SHOWN HEREON, AND EACH SUCH APARTMENT INCLUDES THE SURFACES SO DESCRIBED, THE PORTIONS OF THE BUILDING AND IMPROVEMENTS LYING WITHIN SAID BOUNDARIES (EXCEPT AS NOTED HEREIN) AND THE AIR SPACE SO ENCOMPASSED.

EACH OF THE FOLLOWING AIR SPACES ARE BALCONIES:

- | | | |
|------------------|---|--|
| BUILDING NO. 7: | } | 101B-112B INCL., 114B-117B INCL., 201B-212B INCL., 214B-217B INCL., 301B-312B INCL., 314B-317B INCL. |
| BUILDING NO. 8: | | |
| BUILDING NO. 10: | | |
| BUILDING NO. 11: | | |
| BUILDING NO. 12: | | |
| TOWNHOUSE NO. 4: | 4F-1B1 - 4F-4B1 INCL., 4E-1B1 - 4E-4B1 INCL., 4F-1B2 - 4F-4B2 INCL. | |
| TOWNHOUSE NO. 5: | 5E-1B1 - 5E-4B1 INCL. | |
| TOWNHOUSE NO. 6: | 6F-1B1 - 6F-4B1 INCL., 6E-1B1 - 6E-2B1 INCL., 6F-1B2 - 6F-4B2 | |

THE BOUNDARIES OF EACH SUCH BALCONY ARE THE FINISHED SURFACE OF THE FLOOR THEREOF, A HORIZONTAL PLANE, THE ELEVATION OF WHICH COINCIDES WITH THE ELEVATION OF THE SURFACE OF THE FINISHED CEILING OF THE ADJOINING APARTMENT AND THE EXTERIOR SURFACES OF THE PERIMETER WALLS, WINDOWS AND DOORS OF THE ADJACENT APARTMENT WHERE SUCH SURFACES ADJOIN THE BALCONY, OTHERWISE VERTICAL PLANES AT THE LIMITS OF THE HORIZONTAL DIMENSIONS SHOWN HEREIN FOR EACH SUCH BALCONY. EACH SUCH BALCONY INCLUDES ONLY THE AIR SPACE ENCOMPASSED BY SAID BOUNDARIES.

EACH OF THE FOLLOWING AIR SPACES ARE PATIOS:

- | | |
|------------------|---------------------|
| TOWNHOUSE NO. 4: | 4D-1P - 4D-6P INCL. |
| TOWNHOUSE NO. 5: | 5D-1P - 5D-4P INCL. |
| TOWNHOUSE NO. 6: | 6D-1P - 6D-6P INCL. |

THE BOUNDARIES OF EACH SUCH PATIO ARE THE FINISHED SURFACE OF THE FLOOR THEREOF, A HORIZONTAL PLANE, THE ELEVATION OF WHICH COINCIDES WITH THE ELEVATION OF THE SURFACE OF THE FINISHED CEILING OF THE ADJOINING APARTMENT AND THE EXTERIOR SURFACES OF THE PERIMETER WALLS, WINDOWS AND DOORS OF THE ADJACENT APARTMENT WHERE SUCH SURFACES ADJOIN THE PATIO, OTHERWISE VERTICAL PLANES AT THE LIMITS OF THE HORIZONTAL DIMENSIONS SHOWN HEREIN FOR EACH SUCH PATIO. EACH SUCH PATIO INCLUDES ONLY THE AIR SPACE ENCOMPASSED BY SAID BOUNDARIES.

6. ALL AIR SPACE BOUNDARY LINES INTERSECT AT RIGHT ANGLES EXCEPT WHERE OTHERWISE INDICATED.

7. ALL DIMENSIONAL LINES SHOWN ARE TO EXTERIOR BOUNDARIES OF BUILDINGS AND HOUSES.

WE, THE UNDERSIGNED, BEING ALL OF THE RECORD OWNERS OF, AND RECORD HOLDERS OF SECURITY INTERESTS IN, THE REAL PROPERTY DESCRIBED IN THE PROJECT SHOWN ON THIS MAP, DO HEREBY CONSENT TO THE RECORDED OF THIS WITHIN CONDOMINIUM PLAN PURSUANT TO CHAPTER 1, TITLE 6, PART 4, DIVISION SECOND, CALIFORNIA CIVIL CODE.

RECORD OWNER: LINCOLN PROPERTY COMPANY NO. THIRTYTHREE, INC.
BY: John Vander
BY: Edward Fisher

RECORD HOLDERS OF SECURITY INTERESTS: UNION BANK, A CALIFORNIA CORPORATION
BY: Stanley J. Kafka
BY: Edward A. Harris

STATE OF CALIFORNIA)
COUNTY OF LOS ANGELES) SS.
On April 30, 1978 before me, the undersigned, a Notary Public in and for said State, personally appeared John R. Longman known to me to be the resident and David G. Fisher known to me to be secretary of the corporation that executed the within instrument, known to me to be the persons who executed the within instrument on behalf of the corporation therein named, and acknowledged to me that such corporation executed the within instrument pursuant to its by-laws or a resolution of its board of directors.

OFFICIAL SEAL
ROSEMARIE FLORA
NOTARY PUBLIC - CALIFORNIA
PRINCIPAL OFFICE IN
LOS ANGELES COUNTY
My Commission Expires Aug. 12, 1979

STATE OF CALIFORNIA)
COUNTY OF LOS ANGELES) SS.
On MAY 2, 1978 before me, the undersigned, a Notary Public in and for said State, personally appeared STANLEY J. KAFKA known to me to be the SR. V. President, and EDWARD A. HARRIS known to me to be V.P. of the corporation that executed the within instrument, known to me to be the persons who executed the within instrument on behalf of the corporation therein named, and acknowledged to me that such corporation executed the within instrument pursuant to its by-laws or a resolution of its board of directors.

OFFICIAL SEAL
FRANCES A. CROWTHER
NOTARY PUBLIC - CALIFORNIA
PRINCIPAL OFFICE IN
LOS ANGELES COUNTY
My Commission Expires June 30, 1979

RECORDED IN OFFICIAL RECORDS OF LOS ANGELES COUNTY, CALIF.
Min. 6 A.M. MAY 7 1973
Registrar-Recorder

SHEET 1 OF 14 SHEETS

BASIS OF BEARINGS
THE BEARING NOS 88°55'W OF THE CENTER LINE OF CATALINA AVENUE AS SHOWN ON MAP OF TRACT NO. 31193, AS FILED IN BOOK 925 PAGES 11 AND 12 OF MAPS, RECORDS OF LOS ANGELES COUNTY WAS TAKEN AS THE BASIS OF BEARINGS SHOWN ON THIS MAP.

BENCH MARK
TOP OF EXIST STORM DRAIN N.W. 100' WESTBALLY OF WEST END BLDG. NO. 12. TOP ELEVATION 408.61
BASED ON: CITY OF ARDONDO BEACH DATUM
BENCH MARK H-7 A BRASS CAP IN WALL AT CORNER OF PACIFIC AVENUE AND EMBASSY STREET
ELEVATION 408.200. C.S.P.S. P.C. 708-2
(BENCH MARK NOW DESTROYED)

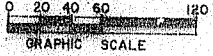
CERTIFICATE OF ENGINEER
I HEREBY CERTIFY THAT THIS PLAN CORRECTLY REPRESENTS THE RELATIONSHIP OF THE UNITS TO THE EXISTING RECORDED LOT LINES.
Stanley J. Kafka
C.E. 12781 DATE 4-30-78

TABLE OF CONTENTS

SHEET 1	TITLE SHEET
SHEET 2	TABULATION OF AIR SPACES
SHEET 3	PROPERTY SURVEY & COMMON AREA DESIGNATION
SHEET 4	LOCATION PLAN APPLIED TO ALL UNITS
SHEET 5	DETAIL SHEET
SHEET 6	BUILDING NO. 7
SHEET 7	BUILDING NO. 8
SHEET 8	BUILDING NO. 9
SHEET 9	BUILDING NO. 10
SHEET 10	BUILDING NO. 11
SHEET 11	BUILDING NO. 12
SHEET 12	TOWNHOUSE NO. 4
SHEET 13	TOWNHOUSE NO. 5
SHEET 14	TOWNHOUSE NO. 6

SHURMAN, ROGOWAY AND ASSOCIATES
CONSULTING CIVIL ENGINEERS
5657 WILSHIRE BOULEVARD
LOS ANGELES, CALIFORNIA 90036
PHONE: (213) 937-2600

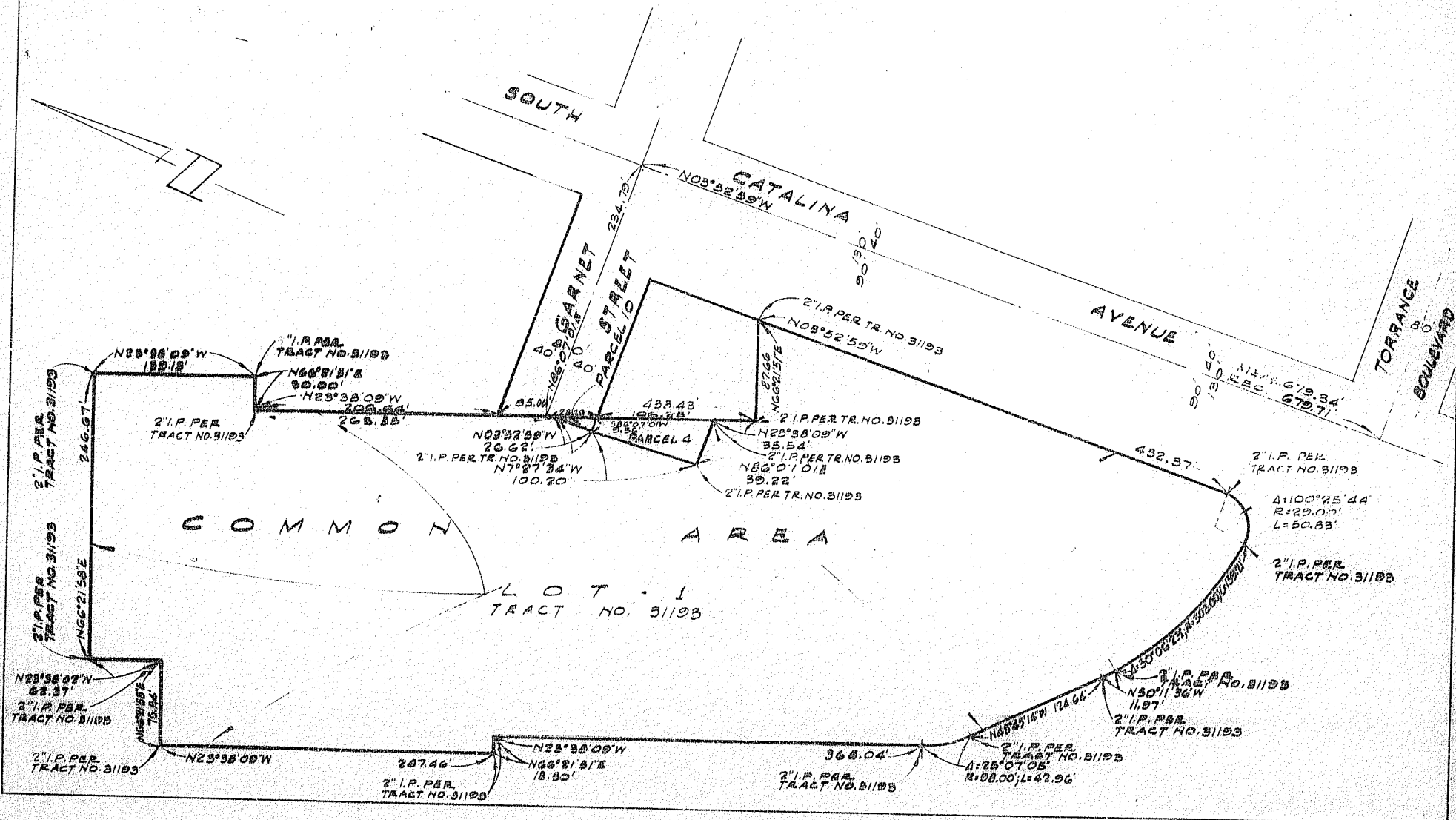
BM 4367 PG 232



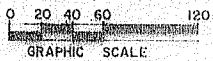
CONDOMINIUM PLAN FOR TRACT NO. 31193

BOOK 825 PAGES 11 AND 12
AND
PARCELS 4 AND 10 OF OFFICIAL MAP NO. 12' BOOK 5 PAGES 21-23.

SHEET 5 OF 14 SHEETS



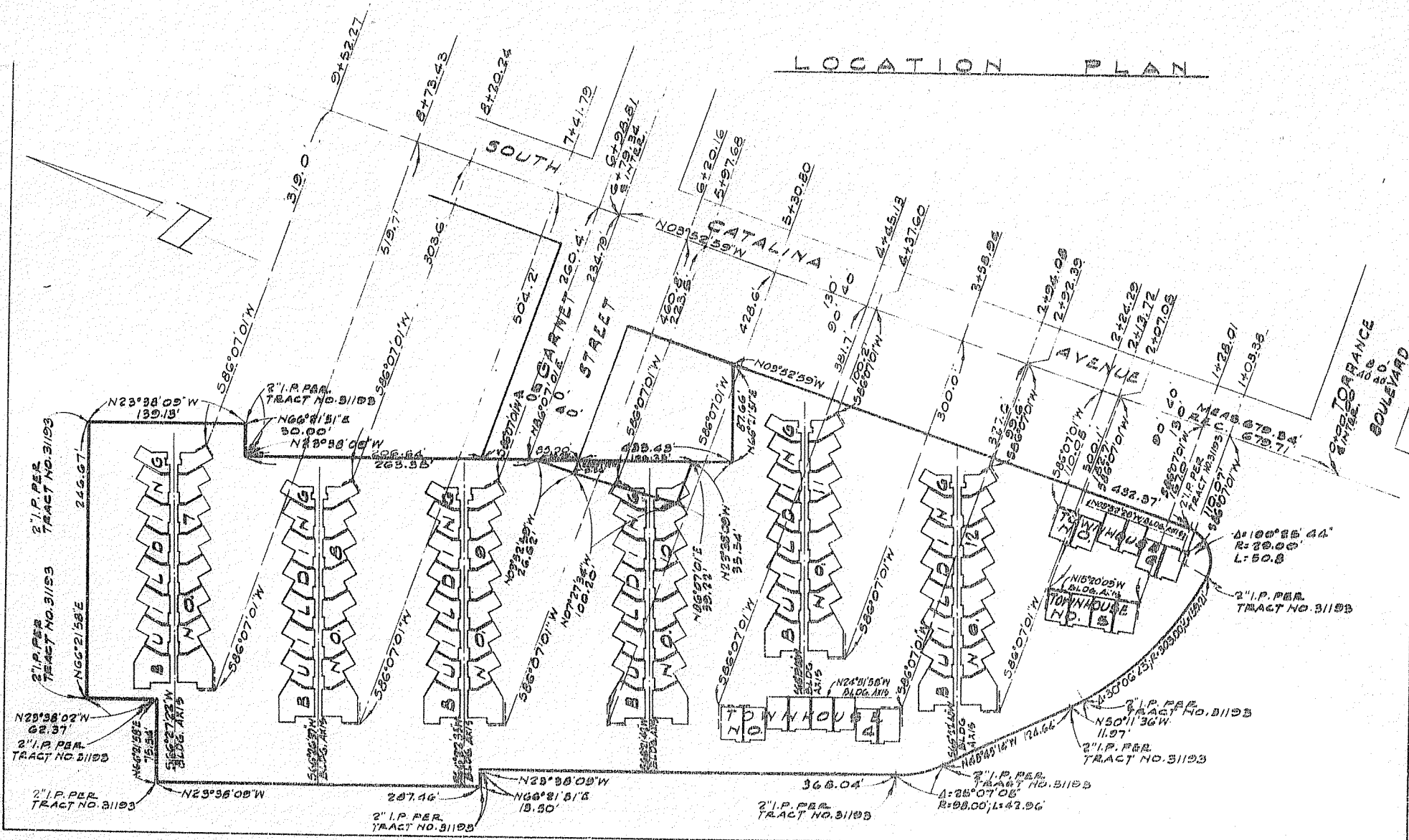
MM4367 pg 233



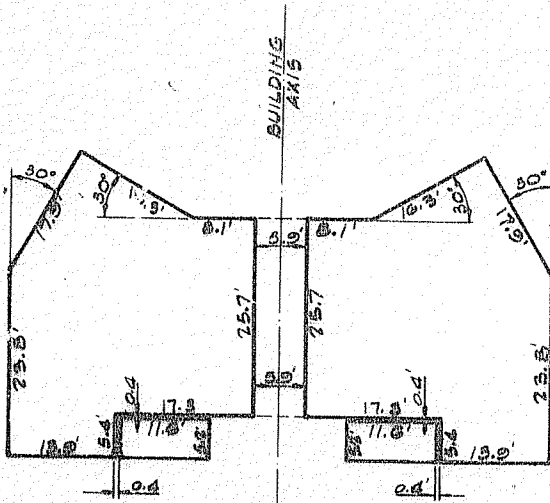
CONDOMINIUM PLAN FOR
TRACT NO. 31193
AND
PARCELS 4 AND 10 OF OFFICIAL MAP NO. 12

SHEET 4 OF 14 SHEETS

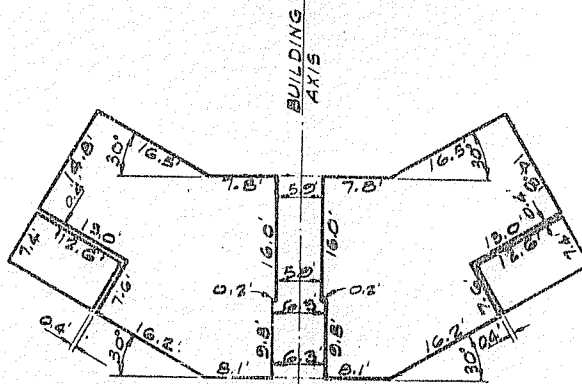
LOCATION PLAN



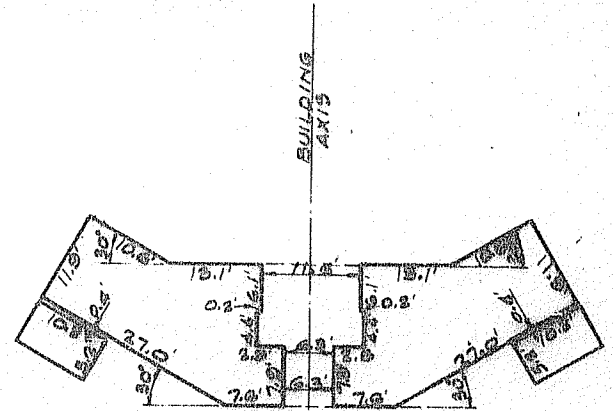
CONDOMINIUM PLAN FOR
TRACT NO. 31193
AND
PARCELS 4 AND 10 OF OFFICIAL MAP NO. 12



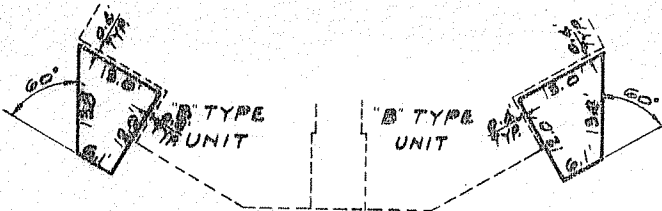
"C" TYPE UNITS



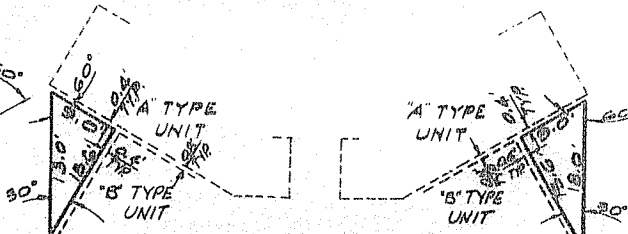
"B" TYPE UNITS



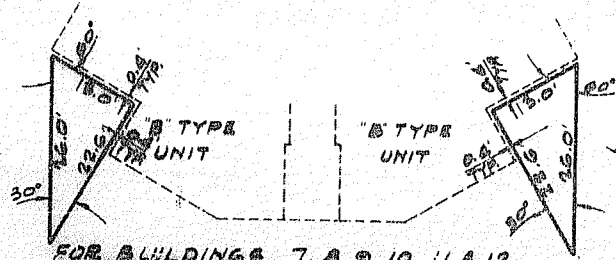
"A" TYPE UNITS



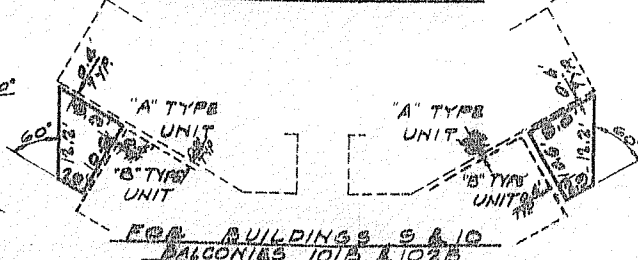
FOR BUILDINGS 7, 9, 10, 11 & 12
BALCONIES 102B & 105B



FOR BUILDINGS 7, 9, 11 & 12
BALCONIES 101B & 102B



FOR BUILDINGS 7, 9, 10, 11 & 12
BALCONIES 103B, 104B, 106B, 107B, 108B, 109B, 109B,
109B, 109B, 111B & 112B



FOR BUILDINGS 9 & 10
BALCONIES 101B & 102B

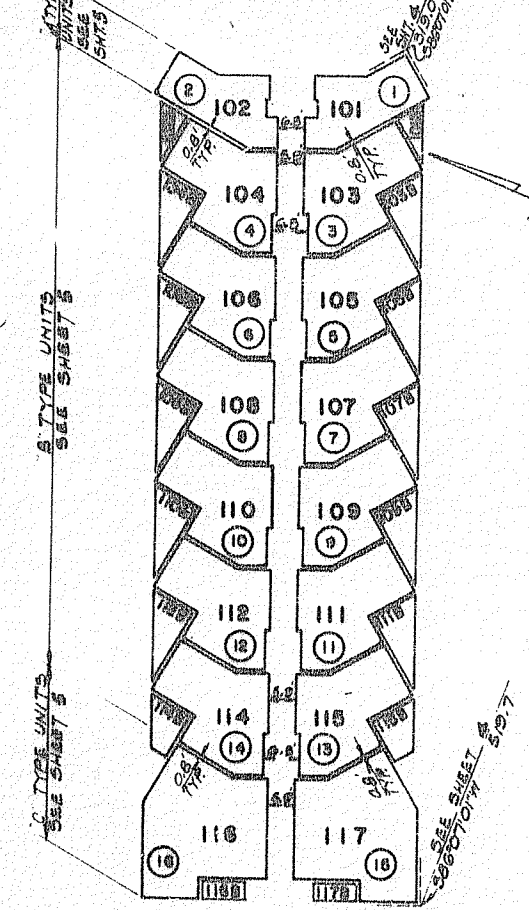
DM 4367 PG 235



CONDOMINIUM PLAN FOR TRACT NO. 31193 AND PARCELS 4 AND 10 OF OFFICIAL MAP NO. 12

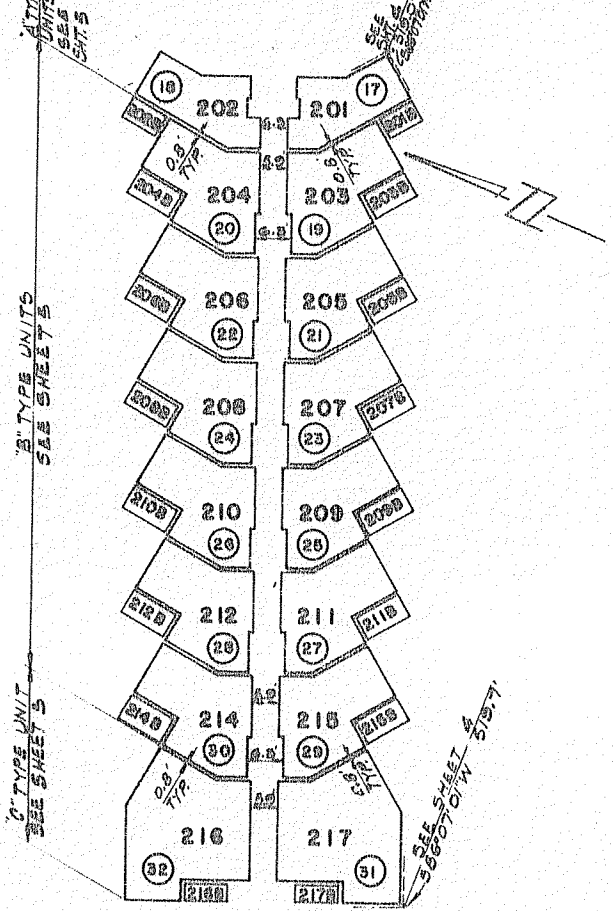
SHEET 6 OF 14 SHEETS

VERTICAL LIMITS OF AIR SPACES
 101, 102, 103, 104, 105, 106, 107, 108, 109, 110, 111, 112, 114, 115, 116, 117
 LOWER LIMIT = 64.3; UPPER LIMIT = 72.5
 101B, 102B, 103B, 104B, 105B, 106B, 107B, 108B, 109B, 110B, 111B, 112B, 114B, 115B, 116B, 117B
 LOWER LIMIT = 64.3; UPPER LIMIT = 72.5



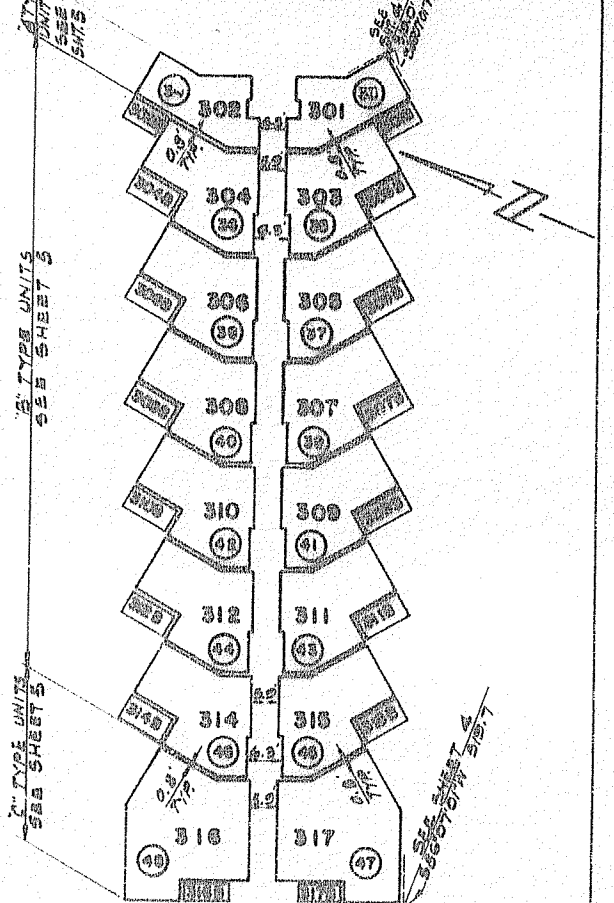
FIRST FLOOR

VERTICAL LIMITS OF AIR SPACES
 201, 202, 203, 204, 205, 206, 207, 208, 209, 210, 211, 212, 214, 215, 216, 217
 LOWER LIMIT = 73.6; UPPER LIMIT = 81.6
 201B, 202B, 203B, 204B, 205B, 206B, 207B, 208B, 209B, 210B, 211B, 212B, 214B, 215B, 216B, 217B
 LOWER LIMIT = 73.6; UPPER LIMIT = 81.6



SECOND FLOOR

VERTICAL LIMITS OF AIR SPACES
 301, 302, 303, 304, 305, 306, 307, 308, 309, 310, 311, 312, 314, 315, 316, 317
 LOWER LIMIT = 82.9; UPPER LIMIT = 90.9
 301B, 302B, 303B, 304B, 305B, 306B, 307B, 308B, 309B, 310B, 311B, 312B, 314B, 315B, 316B, 317B
 LOWER LIMIT = 82.9; UPPER LIMIT = 90.9



THIRD FLOOR

BUILDING NO. 7



CONDOMINIUM PLAN FOR TRACT NO. 31193

SHEET 7 OF 14 SHEETS

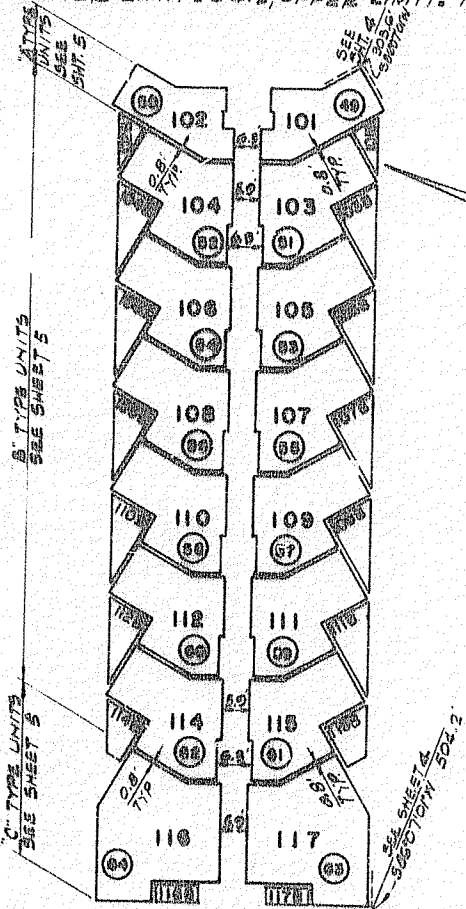
AND PARCELS 4 AND 10 OF OFFICIAL MAP NO. 12

MM4367 p.236

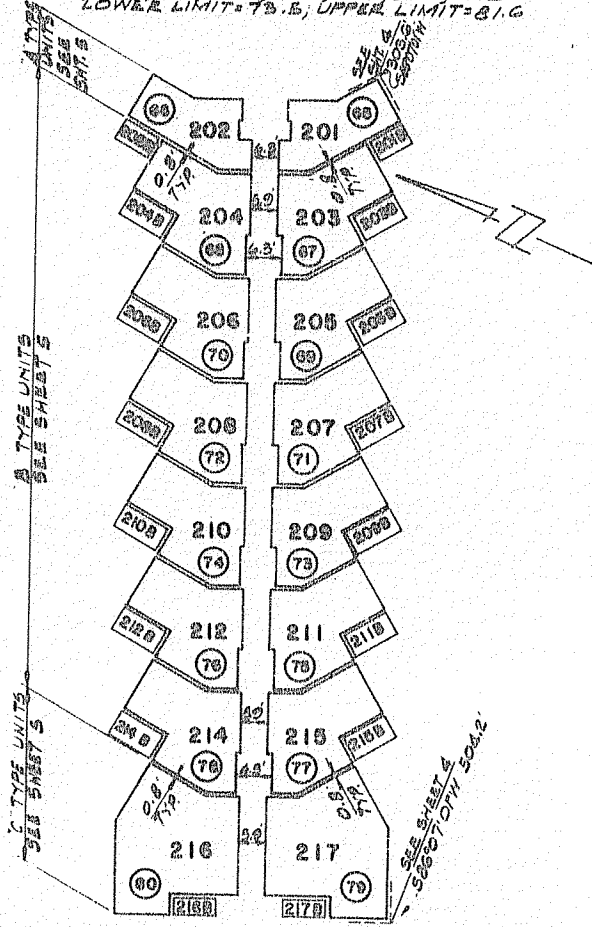
~~VERTICAL LIMITS OF AIR SPACES~~
~~101, 102, 103, 104, 105, 106, 107, 108, 109, 110, 111,~~
~~112, 114, 115, 116, 117~~
 LOWER LIMIT = 64.3; UPPER LIMIT = 72.3
~~101A, 102B, 103B, 104B, 105B, 106A, 107B, 108B, 109B,~~
~~110B, 111B, 112B, 114B, 115B, 116B, 117B~~
 LOWER LIMIT = 64.2; UPPER LIMIT = 72.3

~~VERTICAL LIMITS OF AIR SPACES~~
~~201, 202, 203, 204, 205, 206, 207, 208, 209, 210, 211~~
~~212, 214, 215, 216, 217~~
 LOWER LIMIT = 73.6; UPPER LIMIT = 81.6
~~201A, 202B, 203B, 204B, 205B, 206B, 207B, 208B,~~
~~209B, 210B, 211B, 212B, 214B, 215B, 216B, 217B~~
 LOWER LIMIT = 73.5; UPPER LIMIT = 81.6

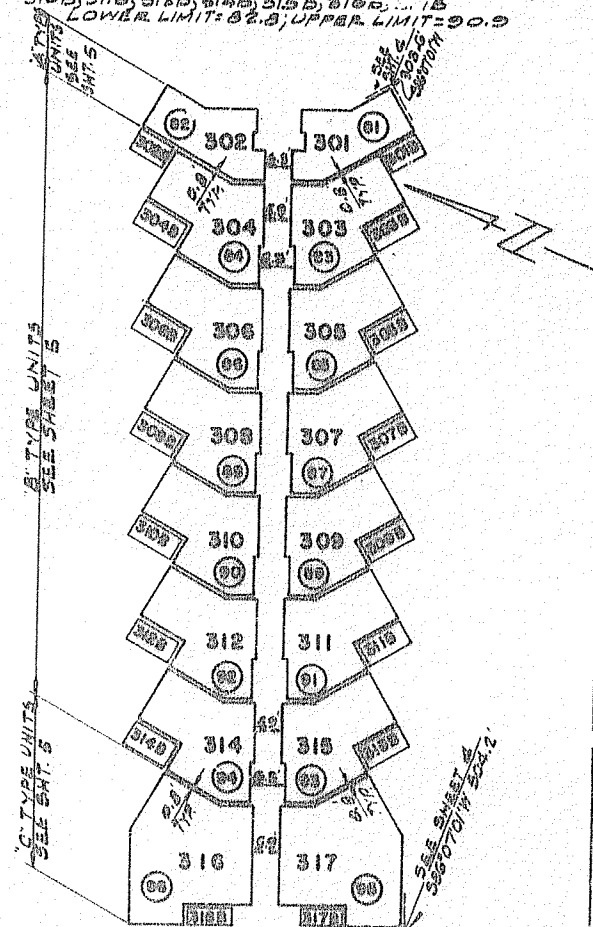
~~VERTICAL LIMITS OF AIR SPACES~~
~~301, 302, 303, 304, 305, 306, 307, 308, 309, 310, 311,~~
~~312, 314, 315, 316, 317~~
 LOWER LIMIT = 82.9; UPPER LIMIT = 90.9
~~301A, 302B, 303B, 304B, 305B, 306B, 307B, 308B, 309B,~~
~~310B, 311B, 312B, 314B, 315B, 316B, 317B~~
 LOWER LIMIT = 82.8; UPPER LIMIT = 90.9



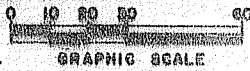
FIRST FLOOR



SECOND FLOOR



BM4367 pg 237



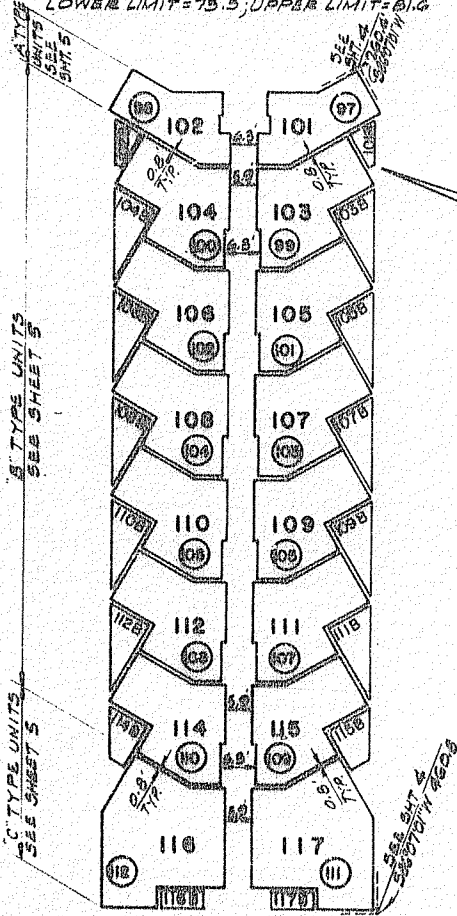
CONDOMINIUM PLAN FOR TRACT NO. 31193 AND PARCELS 4 AND 10 OF OFFICIAL MAP NO. 12

SHEET 5 OF 14 SHEETS

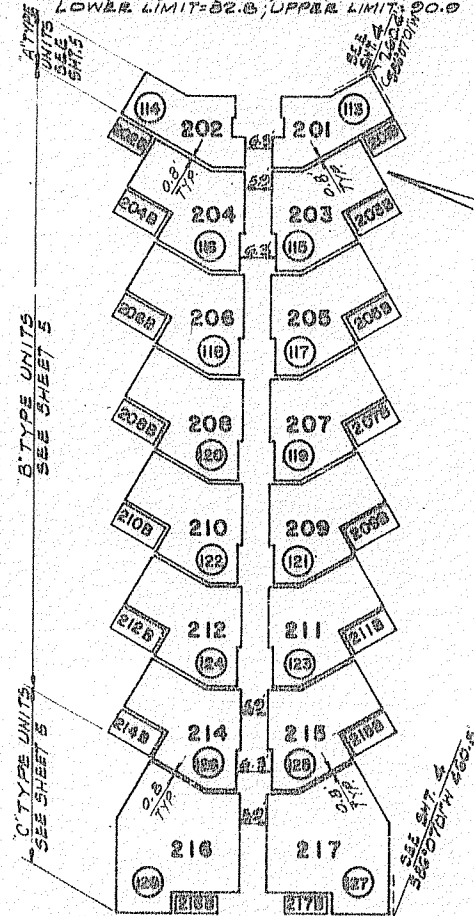
~~VERTICAL LIMITS OF AIR SPACES~~
101, 102, 103, 104, 105, 106, 107, 108, 109, 110, 111, 112, 114, 113, 116, 117
LOWER LIMIT = 73.0; UPPER LIMIT = 81.0
101B, 102B, 103B, 104B, 105B, 106B, 107B, 108B, 109B, 110B, 111B, 112B, 114B, 115B, 116B, 117B
LOWER LIMIT = 73.5; UPPER LIMIT = 81.4

~~VERTICAL LIMITS OF AIR SPACES~~
201, 202, 203, 204, 205, 206, 207, 208, 209, 210, 211, 212, 214, 213, 216, 217
LOWER LIMIT = 82.0; UPPER LIMIT = 90.0
201B, 202B, 203B, 204B, 205B, 206B, 207B, 208B, 209B, 210B, 211B, 212B, 214B, 215B, 216B, 217B
LOWER LIMIT = 82.5; UPPER LIMIT = 90.0

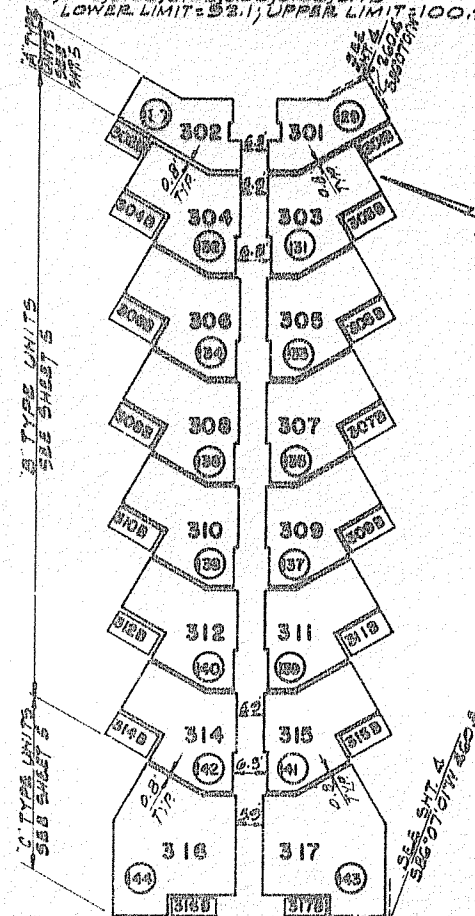
~~VERTICAL LIMITS OF AIR SPACES~~
301, 302, 303, 304, 305, 306, 307, 308, 309, 310, 311, 312, 314, 313, 316, 317
LOWER LIMIT = 92.2; UPPER LIMIT = 100.2
301B, 302B, 303B, 304B, 305B, 306B, 307B, 308B, 309B, 310B, 311B, 312B, 314B, 315B, 316B, 317B
LOWER LIMIT = 93.1; UPPER LIMIT = 100.2



FIRST FLOOR



SECOND FLOOR
BUILDING NO. 9



THIRD FLOOR



CONDOMINIUM PLAN FOR
TRACT NO. 31193
AND
PARCELS 4 AND 10 OF OFFICIAL MAP NO. 12

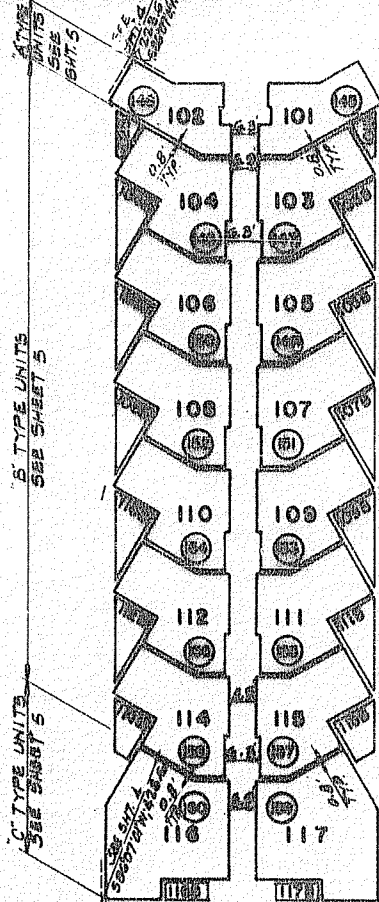
SHEET 2 OF 14 SHEETS

DM 4367 pg 238

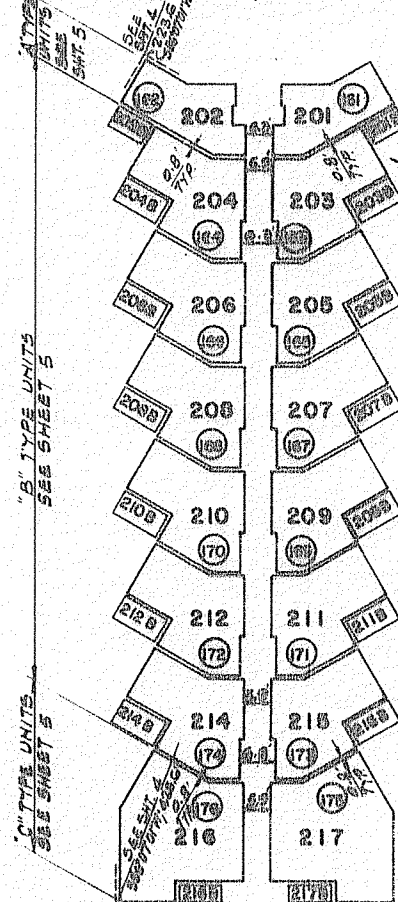
VERTICAL LIMITS OF AIR SPACES
101, 102, 103, 104, 105, 106, 107, 108, 109, 110, 111,
112, 114, 115, 116, 117
LOWER LIMIT=73.7; UPPER LIMIT=81.7
101B, 102B, 103B, 104B, 105B, 106B, 107B, 108B, 109B,
110B, 111B, 112B, 114B, 115B, 116B, 117B
LOWER LIMIT=73.3; UPPER LIMIT=81.7

VERTICAL LIMITS OF AIR SPACES
201, 202, 203, 204, 205, 206, 207, 208, 209, 210, 211,
212, 214, 215, 216, 217
LOWER LIMIT=88.0; UPPER LIMIT=91.0
201B, 202B, 203B, 204B, 205B, 206B, 207B, 208B, 209B,
210B, 211B, 212B, 214B, 215B, 216B, 217B
LOWER LIMIT=82.0; UPPER LIMIT=91.0

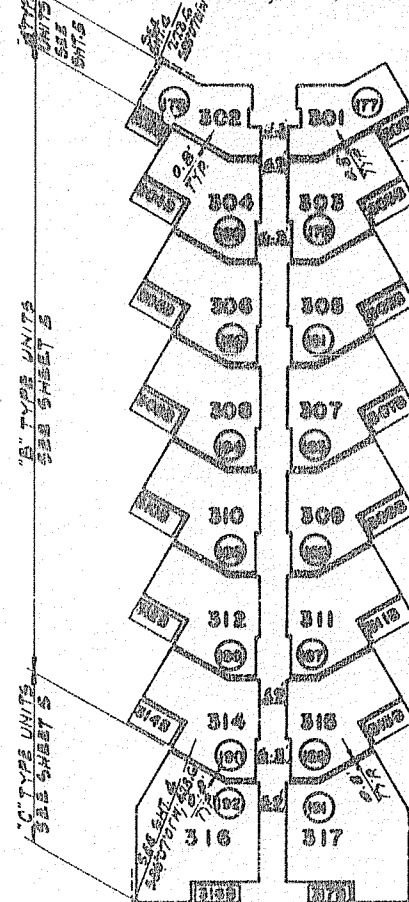
VERTICAL LIMITS OF AIR SPACES
301, 302, 303, 304, 305, 306, 307, 308, 309, 310, 311,
312, 314, 315, 316, 317
LOWER LIMIT=92.3; UPPER LIMIT=100.3
301B, 302B, 303B, 304B, 305B, 306B, 307B, 308B, 309B,
310B, 311B, 312B, 314B, 315B, 316B, 317B
LOWER LIMIT=82.2; UPPER LIMIT=100.3



FIRST FLOOR



SECOND FLOOR
BUILDING NO. 10



THIRD FLOOR

BM 4367 PG 239



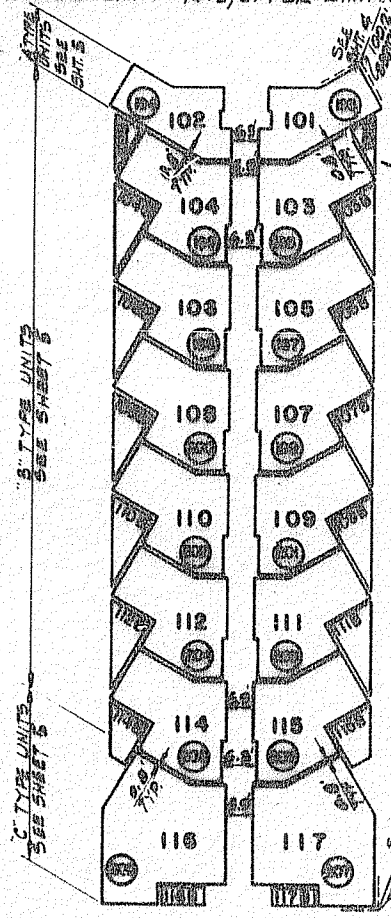
CONDOMINIUM PLAN FOR
TRACT NO. 31193
AND
PARCELS 4 AND 16 OF OFFICIAL MAP NO. 12

SHEET 10 OF 14 SHEETS

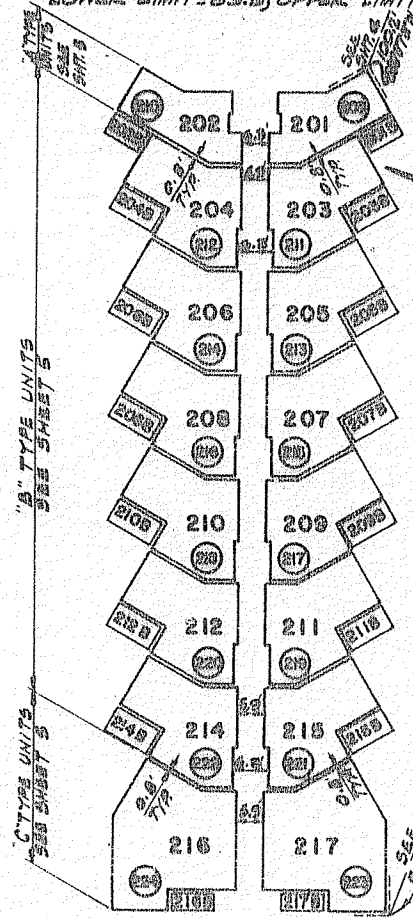
VERTICAL LIMITS OF AIR SPACES
101, 102, 103, 104, 105, 106, 107, 108, 109, 110, 111
112, 114, 115, 116, 117
LOWER LIMIT = 74.3; UPPER LIMIT = 82.8
101B, 102B, 103B, 104B, 105B, 106B, 107B, 108B, 109B,
110B, 111B, 112B, 114B, 115B, 116B, 117B
LOWER LIMIT = 74.2; UPPER LIMIT = 82.8

VERTICAL LIMITS OF AIR SPACES
201, 202, 203, 204, 205, 206, 207, 208, 209, 210, 211
212, 214, 215, 216, 217
LOWER LIMIT = 83.0; UPPER LIMIT = 91.6
201B, 202B, 203B, 204B, 205B, 206B, 207B, 208B, 209B,
210B, 211B, 212B, 214B, 215B, 216B, 217B
LOWER LIMIT = 83.0; UPPER LIMIT = 91.6

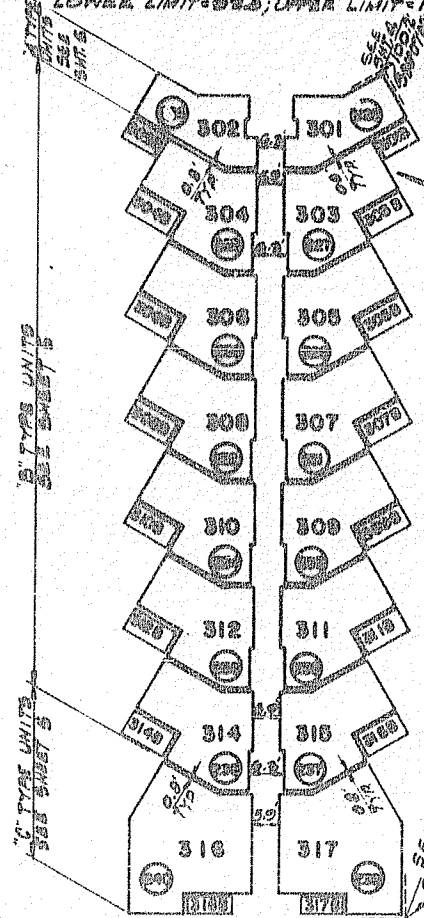
VERTICAL LIMITS OF AIR SPACES
301, 302, 303, 304, 305, 306, 307, 308, 309, 310, 311
312, 314, 315, 316, 317
LOWER LIMIT = 92.0; UPPER LIMIT = 100.0
301B, 302B, 303B, 304B, 305B, 306B, 307B, 308B, 309B,
310B, 311B, 312B, 314B, 315B, 316B, 317B
LOWER LIMIT = 92.0; UPPER LIMIT = 100.0



FIRST FLOOR



SECOND FLOOR
BUILDING NO. 11



THIRD FLOOR



CONDOMINIUM PLAN FOR
TRACT NO. 31193
AND
PARCELS 4 AND 10 OF OFFICIAL MAP NO. 12

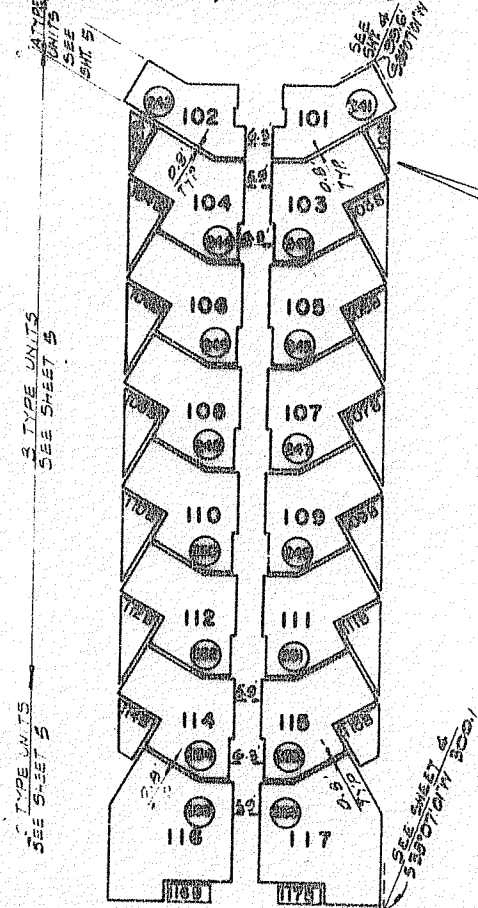
SHEET 11 OF 14 SHEETS

BM 4367 PC 240

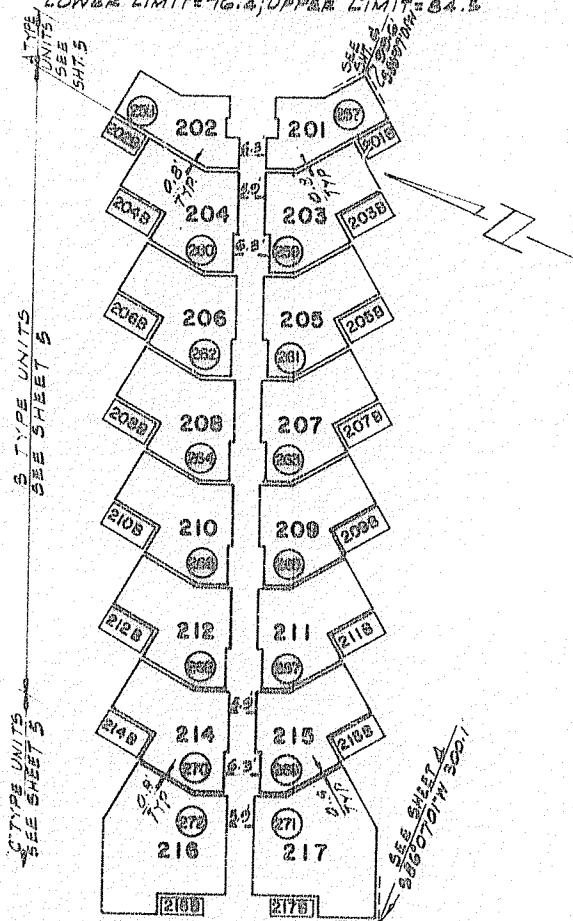
VERTICAL LIMITS OF AIR SPACES
101, 102, 103, 104, 105, 106, 107, 108, 109, 110, 111,
112, 114, 115, 116, 117
LOWER LIMIT = 67.3; UPPER LIMIT = 75.2
101B, 102B, 103B, 104B, 105B, 106B, 107B, 108B, 109B,
110B, 111B, 112B, 114B, 115B, 116B, 117B
LOWER LIMIT = 67.1; UPPER LIMIT = 75.2

VERTICAL LIMITS OF AIR SPACES
201, 202, 203, 204, 205, 206, 207, 208, 209, 210, 211,
212, 214, 215, 216, 217
LOWER LIMIT = 76.5; UPPER LIMIT = 84.5
201B, 202B, 203B, 204B, 205B, 206B, 207B, 208B, 209B,
210B, 211B, 212B, 214B, 215B, 216B, 217B
LOWER LIMIT = 76.4; UPPER LIMIT = 84.5

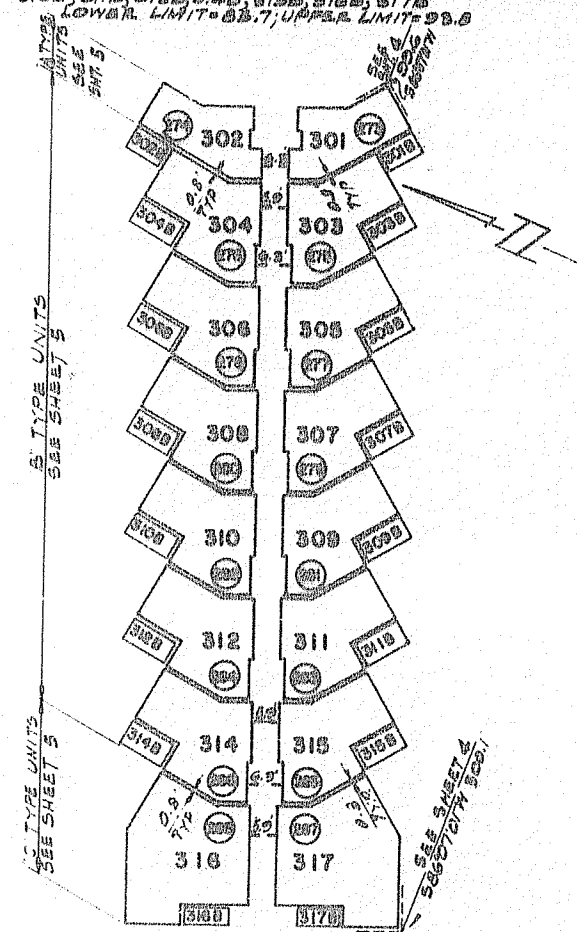
VERTICAL LIMITS OF AIR SPACES
301, 302, 303, 304, 305, 306, 307, 308, 309, 310, 311,
312, 314, 315, 316, 317
LOWER LIMIT = 83.8; UPPER LIMIT = 92.8
301B, 302B, 303B, 304B, 305B, 306B, 307B, 308B, 309B, 310B,
311B, 312B, 314B, 315B, 316B, 317B
LOWER LIMIT = 83.7; UPPER LIMIT = 92.8



FIRST FLOOR



SECOND FLOOR
BUILDING NO. 12



THIRD FLOOR

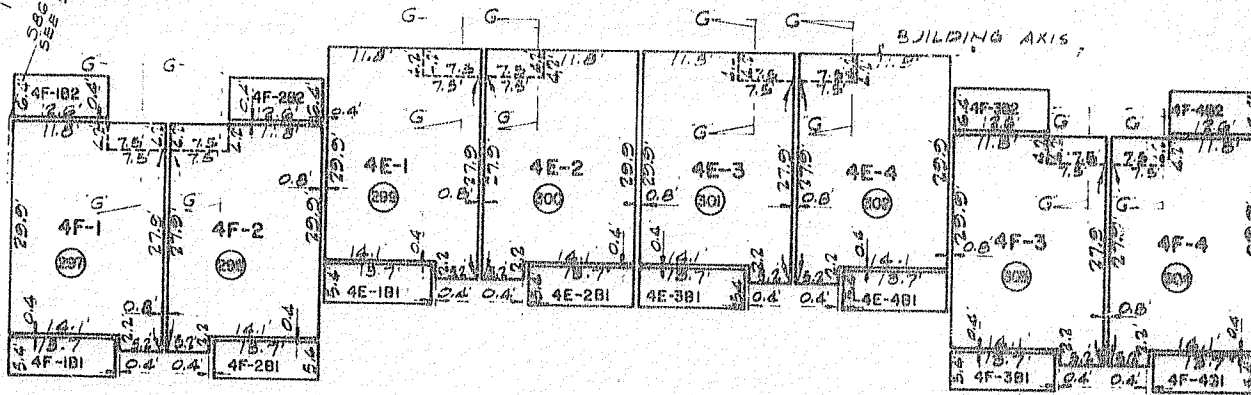
MA 367 PG 241

CONDOMINIUM PLAN FOR

TRACT NO. 31193

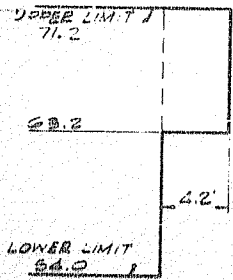
AND
PARCELS 4 AND 10 OF OFFICIAL MAP NO. 12

SHEET 12 OF 14 SHEETS

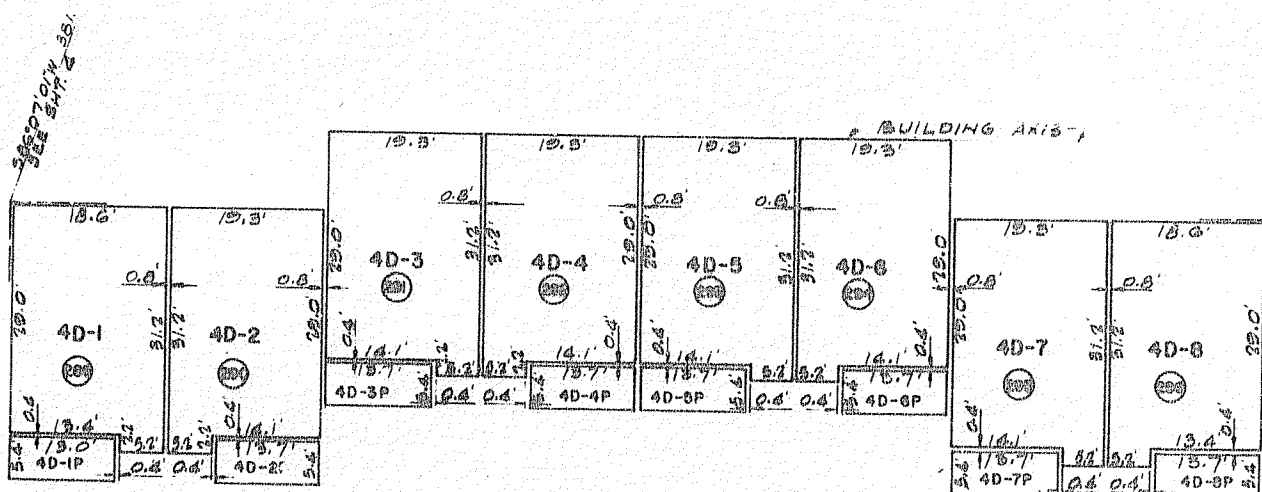


SECOND FLOOR

VERTICAL LIMITS
OF THE PARCELS
4F-1, 4F-2, 4F-3, 4F-4, 4E-1
4E-2, 4E-3, 4E-4
LOWER LIMIT=54.0
UPPER LIMIT=71.2
4F-1BI, 4F-2BI, 4F-3BI, 4F-4BI
4E-1BI, 4E-2BI, 4E-3BI, 4E-4BI
LOWER LIMIT=53.5
UPPER LIMIT=71.2



SECTION G-G
NO SCALE



GROUND FLOOR

VERTICAL LIMITS
OF THE PARCELS
4D-1, 4D-2, 4D-3, 4D-4, 4D-5
4D-6, 4D-7, 4D-8
LOWER LIMIT=44.0
UPPER LIMIT=53.0
4D-1P, 4D-2P, 4D-3P, 4D-4P
4D-5P, 4D-6P, 4D-7P, 4D-8P
LOWER LIMIT=44.0
UPPER LIMIT=53.0

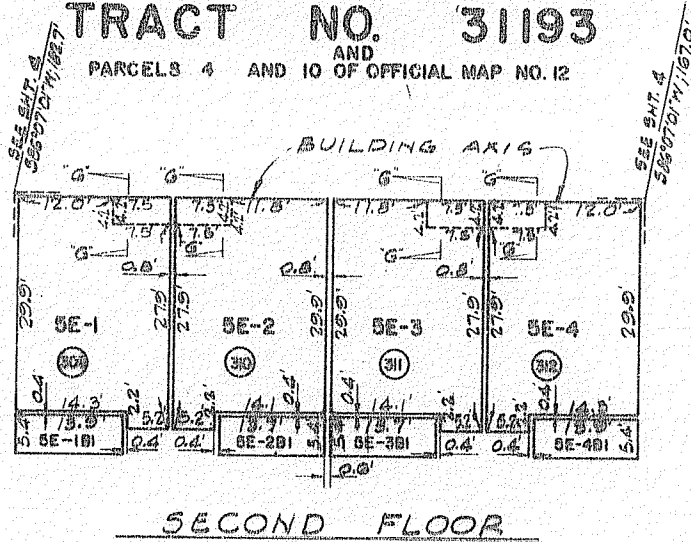
TOWNHOUSE NO. 4

BMM4367P0242

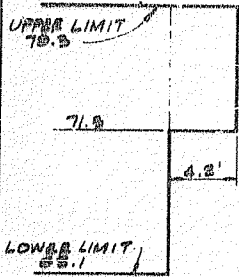


CONDOMINIUM PLAN FOR
TRACT NO. 31193
 AND
 PARCELS 4 AND 10 OF OFFICIAL MAP NO. 12

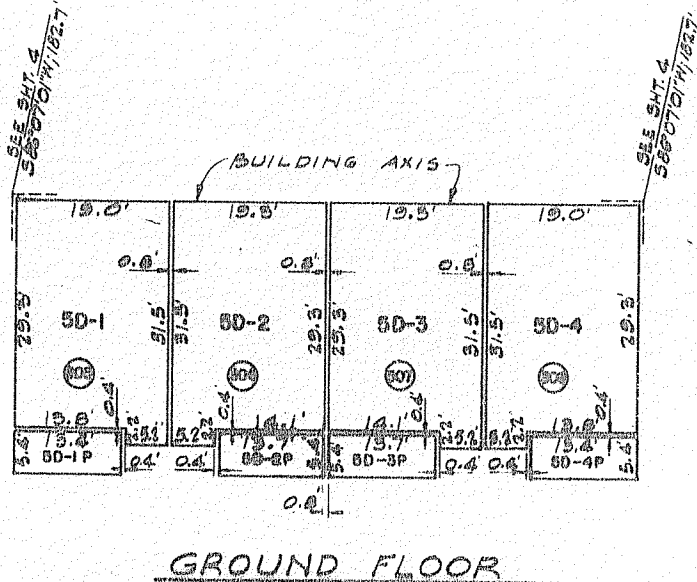
SHEET 15 OF 14 SHEETS



VERTICAL LIMITS
~~5E-1, 5E-2, 5E-3, 5E-4~~
 LOWER LIMIT = 68.7
 UPPER LIMIT = 70.5
 5E-1B1, 5E-2B1, 5E-3B1, 5E-4B1
 LOWER LIMIT = 68.0
 UPPER LIMIT = 70.5



SECTION G-G
 NO SCALE



VERTICAL LIMITS
~~5D-1, 5D-2, 5D-3, 5D-4~~
 LOWER LIMIT = 55.1
 UPPER LIMIT = 61.1
 5D-1P, 5D-2P, 5D-3P, 5D-4P
 LOWER LIMIT = 55.0
 UPPER LIMIT = 61.0

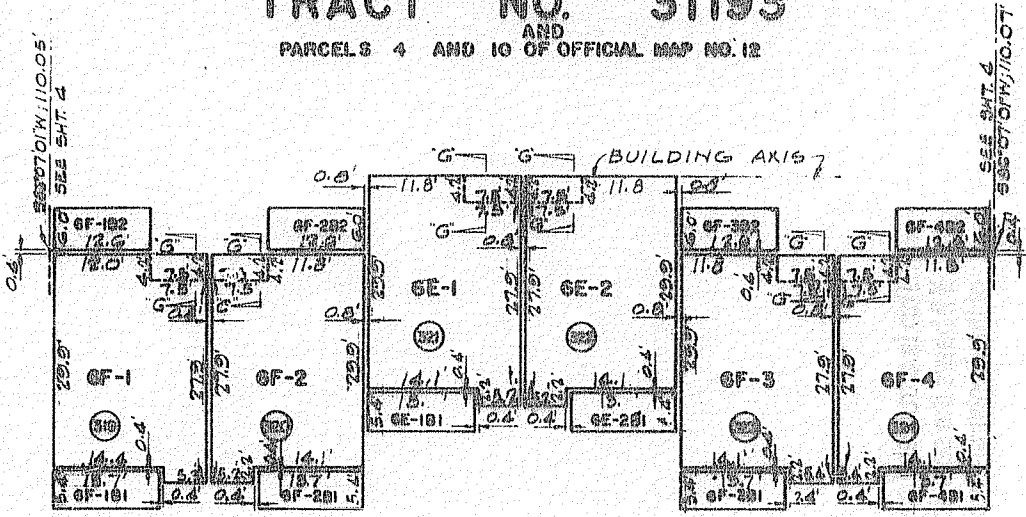
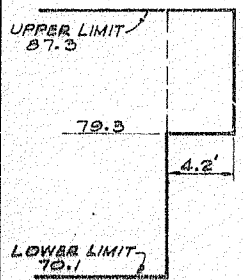
TOWNHOUSE NO. 5

MM4367-243



CONDOMINIUM PLAN FOR TRACT NO. 31193 AND PARCELS 4 AND 10 OF OFFICIAL MAP NO. 12

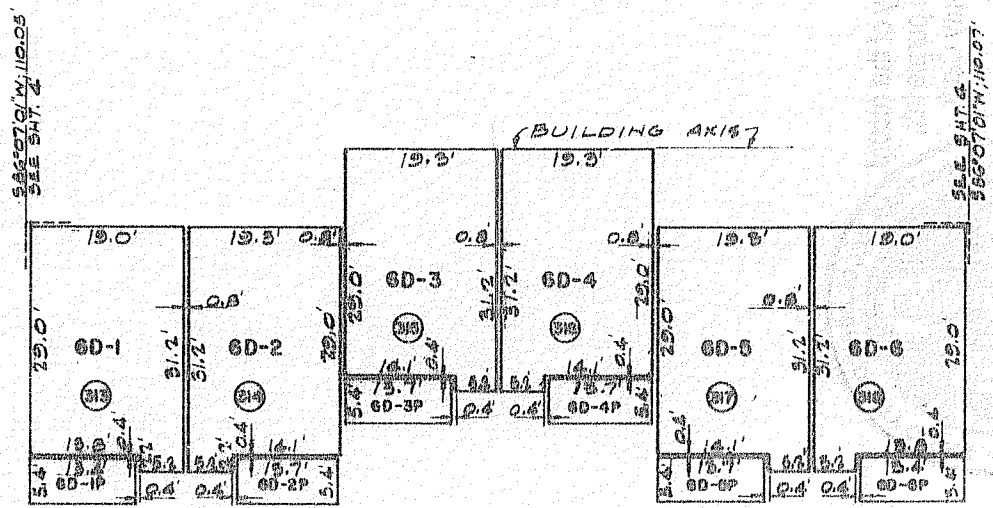
SHEET 14 OF 14 SHEETS



VERTICAL LIMITS
GF-1, GF-2, GF-3, GF-4, GF-1B1, GF-1B2
LOWER LIMIT = 70.1
UPPER LIMIT = 87.3
GF-1B1, GF-2B1, GF-3B1, GF-4B1, GF-1B2, GF-2B2, GF-3B2, GF-4B2
LOWER LIMIT = 70.0
UPPER LIMIT = 87.3

SECOND FLOOR

SECTION G-G
NO SCALE



VERTICAL LIMITS
GD-1, GD-2, GD-3, GD-4, GD-5, GD-6
LOWER LIMIT = 69.1
UPPER LIMIT = 89.1
GD-1P, GD-2P, GD-3P, GD-4P, GD-5P, GD-6P
LOWER LIMIT = 69.0
UPPER LIMIT = 89.1

GROUND FLOOR
TOWNHOUSE NO. 6

This is a true and certified copy of the record
if it bears the seal, imprinted in purple ink,
of the Registrar-Recorder/County Clerk

MAY 3 2010

Dean C. Logan REGISTRAR-RECORDER/COUNTY CLERK
LOS ANGELES COUNTY, CALIFORNIA

